

HYDRAULIC DISC BRAKES LB, LBS, LBV- Wet



APPLICATION

- » Heavy Duty machinery
- » Wheel drives
- » Material handling
- » Mining
- » Agricultural machines
- » Conveyors
- » Door openers and swing drives etc.



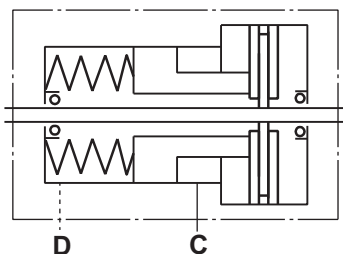
GENERAL

Fluid type	Mineral based- HLP(DIN 51524) or HM(ISO 6743/4)
Temperature range, °C [°F]	-40÷140 [-40÷284]
Viscosity range, mm²/s	20÷75 [98÷347]
Filtration	ISO code 20/16 (nominal filtration of 25 microns)
Maintenance	Changed after the first 50-100 h, then after every 500-1500 h.

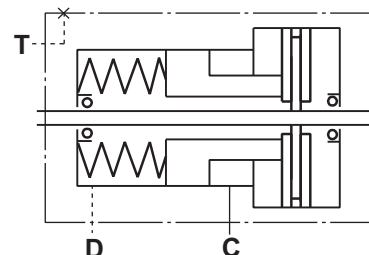
CONTENTS

Hydraulic Disc Brake for MP, MR and MS Motors type LB/288	4÷5
Hydraulic Disc Brake for MSS and MSV type LBS(V)/289	6
Hydraulic Disc Brake for MSS and MSV type LBS(V)/290	7
Output Shafts for LBS(LBV)/289, 290	8
Specification data for LBS(LBV)/289, 290	8
Internal Spline data for .../289,290 and .../314,315.....	8
Load curve for LBS(LBV)/289, 290	9
Order code for LB/288,LBS(LBV)/289, 290	9
Hydraulic Disc Brake for MTS and MTV type LBS(LBV)/314	10
Hydraulic Disc Brake for MTS and MTV type LBS(LBV)/315	11
Specification data for LBS(LBV)/314, 315	12
Load curve for LBS(LBV)/314, 315	12
Output Shafts for LBS(LBV)/314, 315	13
Order code for LBS(LBV)/314, 315	13
Hydraulic Disc Brake for MVS type LBS/313	14
Load curve for LBS/313	14
Hydraulic Disc Brake for MVS type LBS/316	15
Load curve for LBS/316	15
Specification data for LBS/313, 316.....	16
Output Shafts for LBS/313, 316	16
Internal Spline data for LBS/313, 316	17
Order code for LBS/313, 316	17

LB, LBS

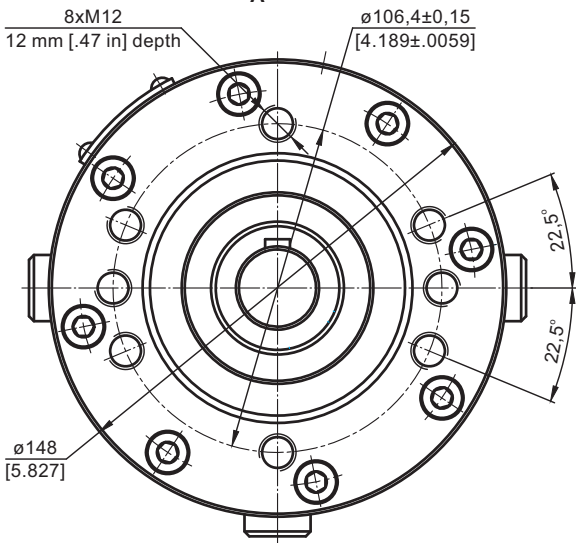
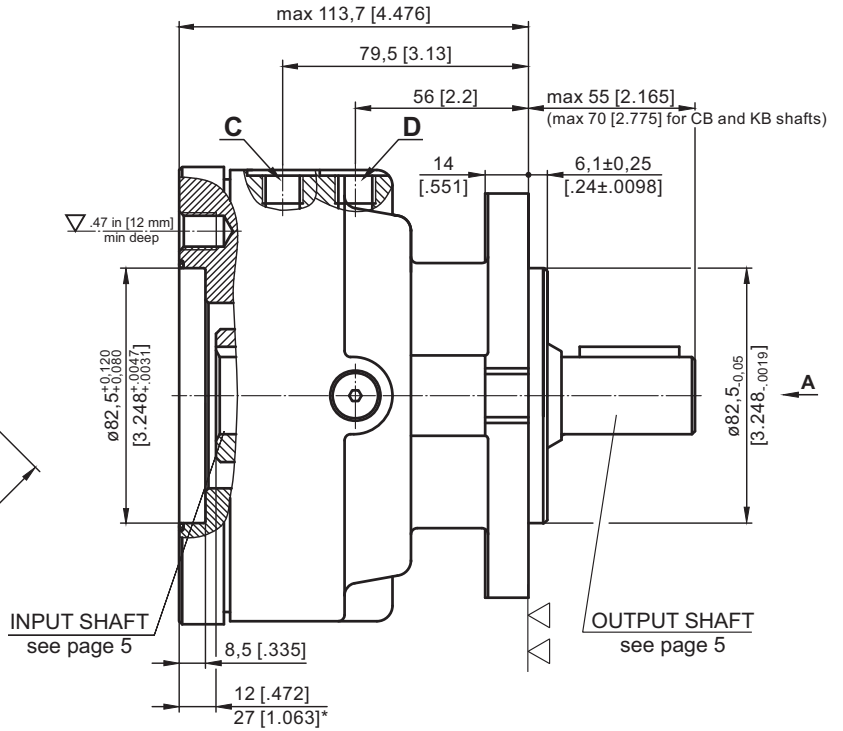
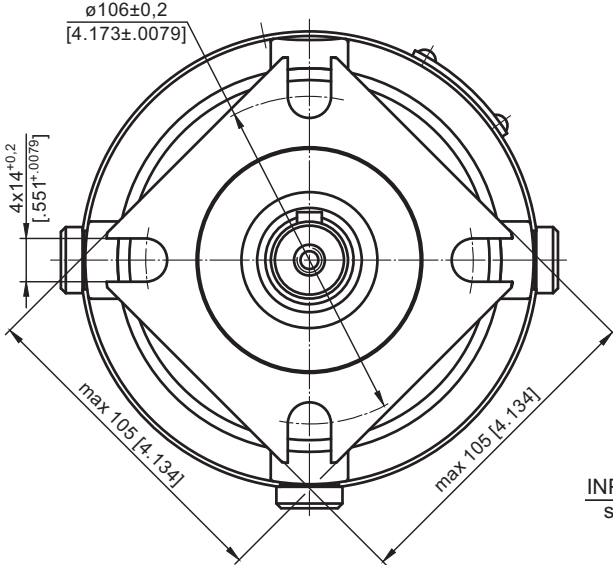


LBV



HYDRAULIC DISC BRAKE for FLANGE ATTACHMENT to MP, MR and MS HYDRAULIC MOTORS

TYPE LB/288



▽ - Place for attachment (tightening torque for screw M12-12.9 - $7^{+0.5}$ daNm [620⁺⁴⁴ lb-in])

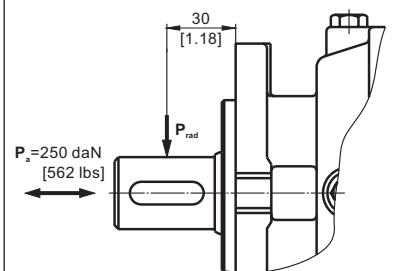
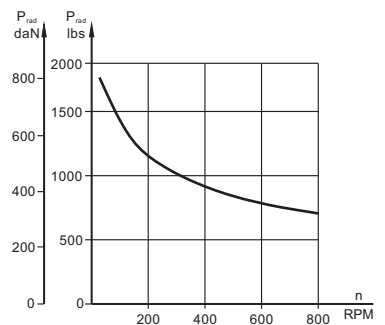
▽▽ - Place for attachment

C: Brake release Port - G $\frac{1}{4}$, 9 mm [0.35 in] depth

D: Drainage tap - G $\frac{1}{4}$, 9 mm [0.35 in] depth

* - For Input Shaft Hole Versions **SH** and **SB**.

LOAD CURVE

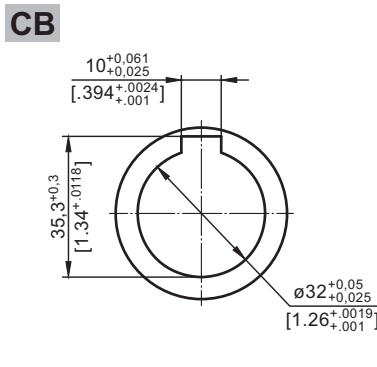
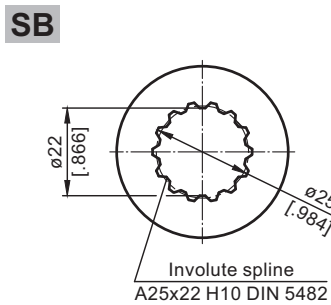
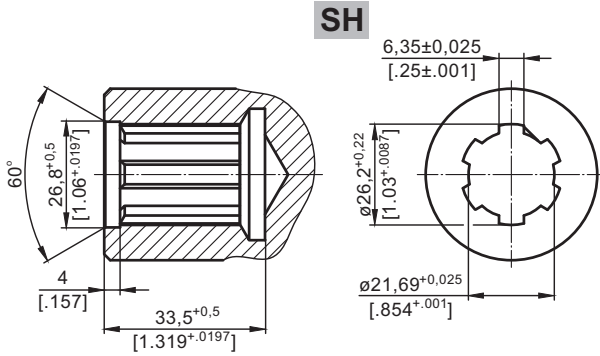
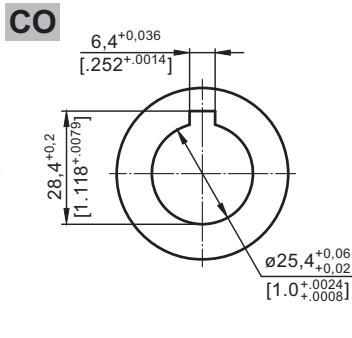
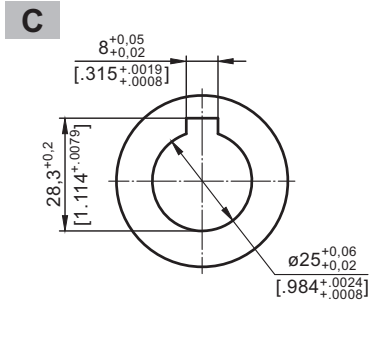


SPECIFICATION DATA

Description LB/288...	7	14	21	32	43	63
*Min. Static Torque, daNm [lb-in]	6-8 [531-708]	13-15 [1150-1327]	20-22 [1770-1947]	31-34 [2743-3009]	41-45 [3628-3982]	61-64 [5399-5665]
Opening Pressure, min bar [PSI]	4-5 [58-73]	8-9 [116-130]	12-13 [174-188]	18-20 [260-290]	24-26 [348-377]	38-39 [550-565]
	max 300 [4350]					
Min. oil quantity for brake releasing, cm ³ [in ³]	7 - 8 [4.27 - .488]					
Oil volume, cm ³ [in ³]	50 - 120 [3.5 - 7.35]					
Max. Pressure in drain space, bar [PSI]	0,5 [7.25]					
Weight, kg [lb]	9 [19.8]					

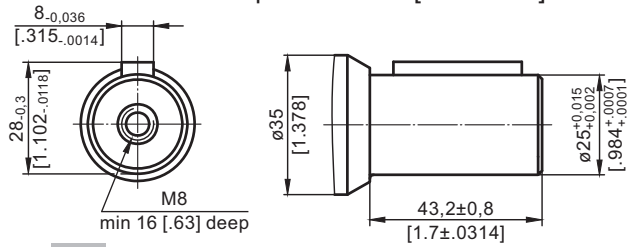
*Static torque is obtained at working pressure - 0 bar [0 PSI].

INPUT SHAFT HOLES

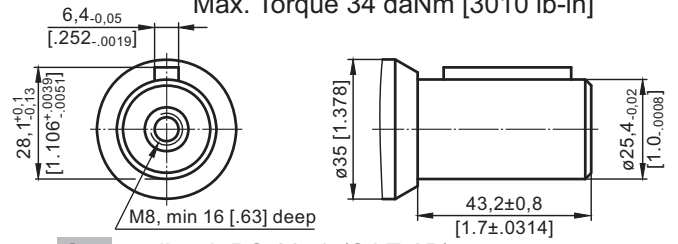


OUTPUT SHAFT EXTENSIONS

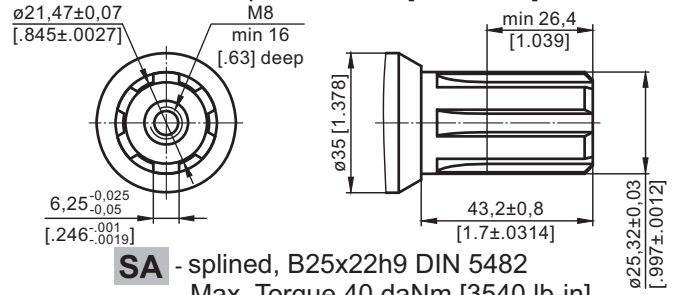
C - ø25 straight, Parallel key A8x7x30 DIN 6885
Max. Torque 34 daNm [3010 lb-in]



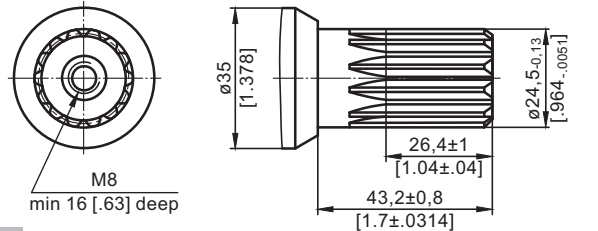
CO - ø1" straight, Parallel key 1/4"x1/4"x1/4" BS46
Max. Torque 34 daNm [3010 lb-in]



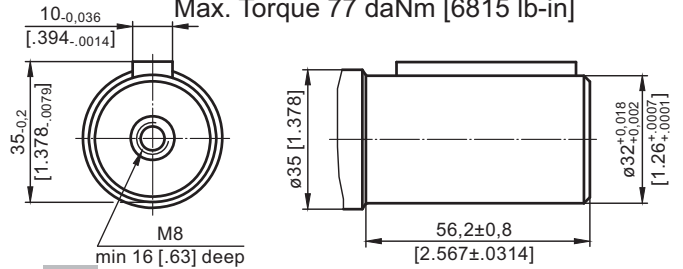
SH - splined, BS 2059 (SAE 6B)
Max. Torque 40 daNm [3540 lb-in]



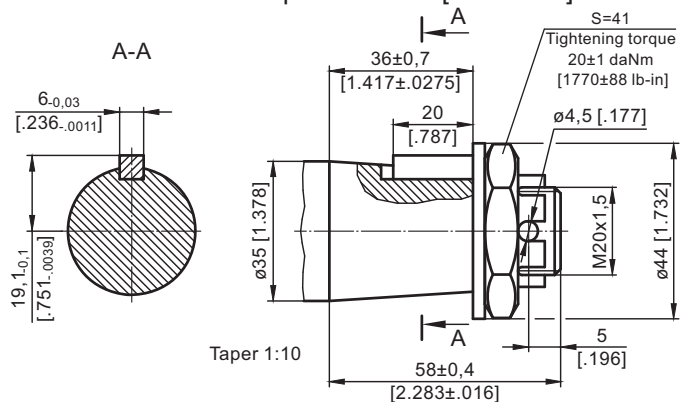
SA - splined, B25x22h9 DIN 5482
Max. Torque 40 daNm [3540 lb-in]



CB - ø32 straight, Parallel key A10x8x45 DIN 6885
Max. Torque 77 daNm [6815 lb-in]

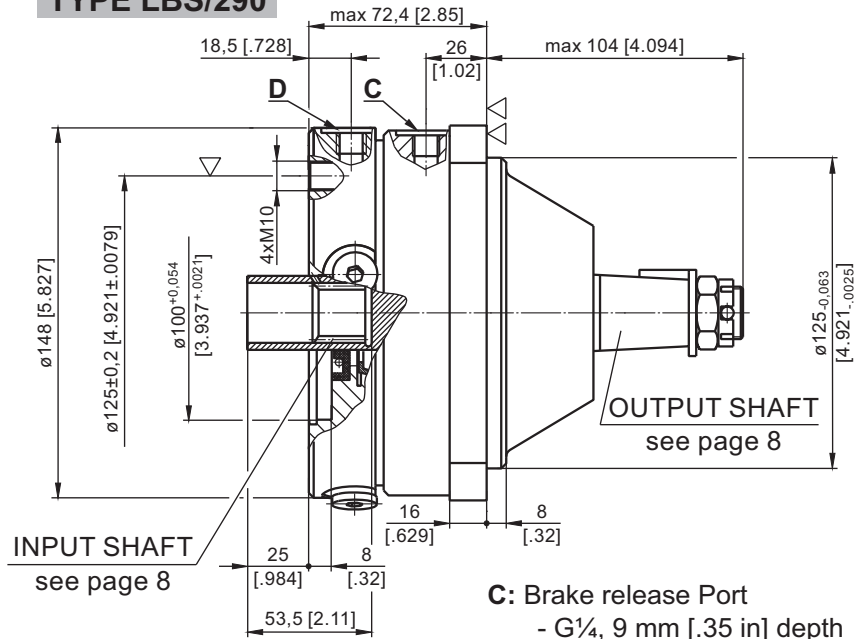
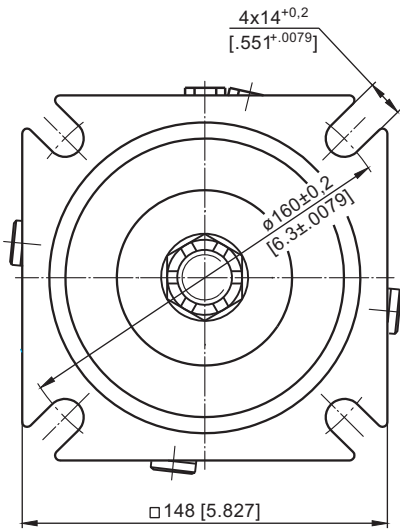


KB - tapered, Parallel key B6x6x20 DIN 6885
Max. Torque 95 daNm [8400 lb-in]



HYDRAULIC DISC BRAKE for FLANGE ATTACHMENT to MSS and MSV HYDRAULIC MOTORS

TYPE LBS/290



▽ - Place for attachment

LBS - tightening torque for screw M10x35 - 12.9 DIN 912 - 6,5⁺⁵ daNm [575⁺⁴⁴ lb-in]

LBV - tightening torque for screw M10xL - 12.9 DIN 931 - 6,5⁺⁵ daNm [575⁺⁴⁴ lb-in]

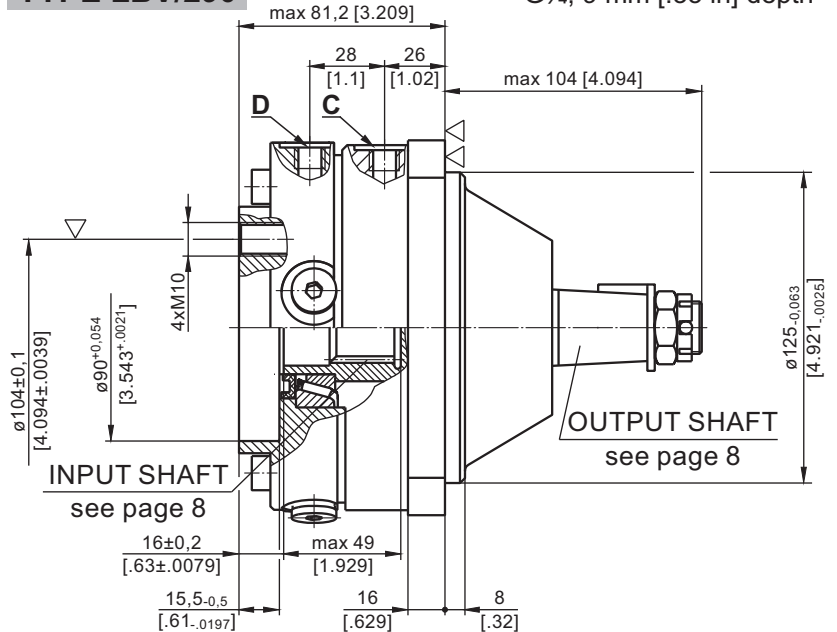
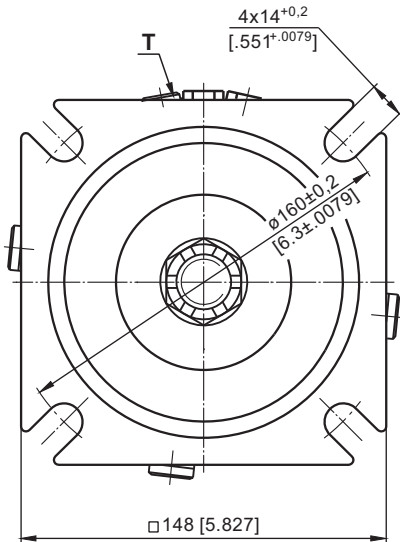
▽▽ - Place for attachment

C: Brake release Port
- G $\frac{1}{4}$, 9 mm [.35 in] depth

D: Drain plug for the Brake
- G $\frac{1}{4}$, 9 mm [.35 in] depth

T: Drain plug for the Motor
- G $\frac{1}{4}$, 9 mm [.35 in] depth

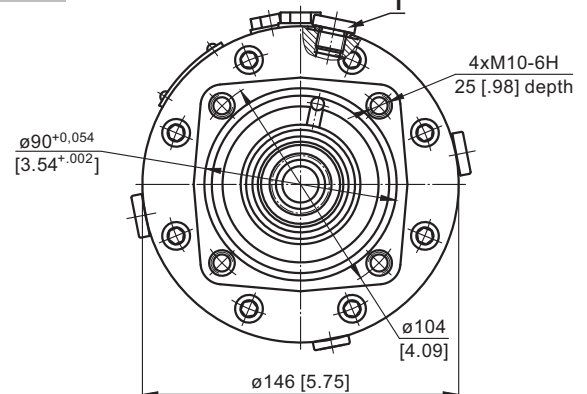
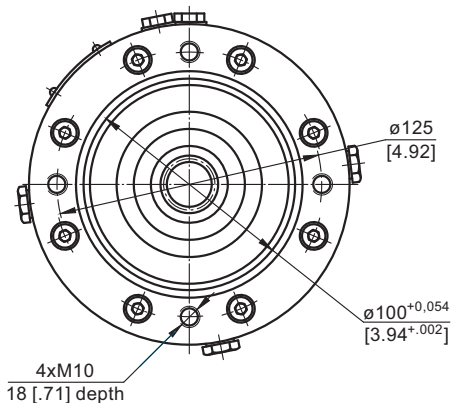
TYPE LBV/290



TYPE LBS/289(290)

INPUT FACE For Versions 289 and 290

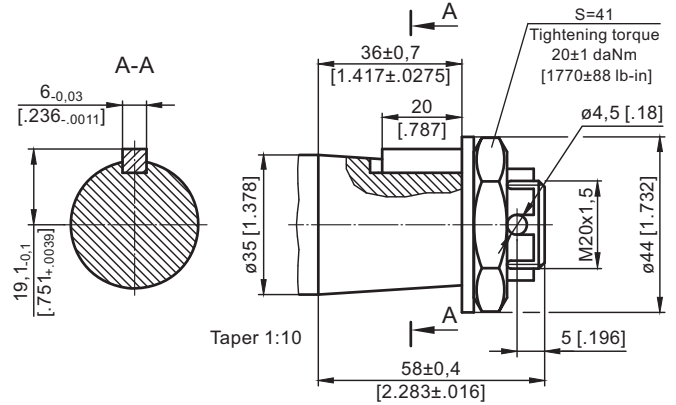
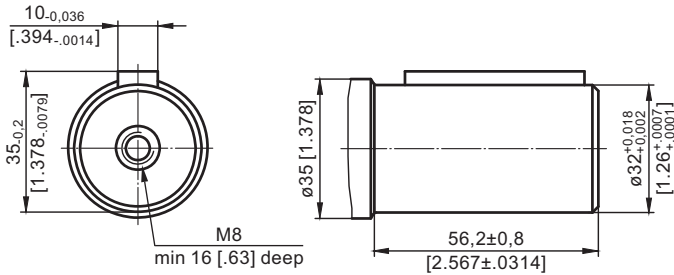
TYPE LBV/289(290)



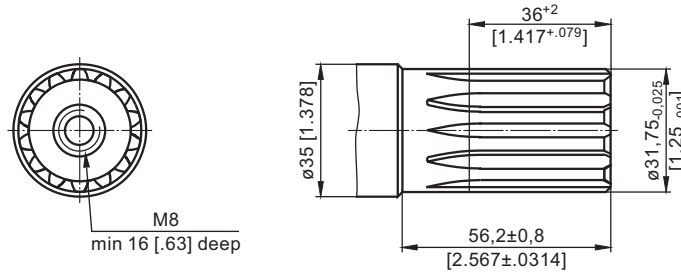
OUTPUT SHAFT EXTENSIONS

CB - $\varnothing 32$ straight, Parallel key A10x8x45 DIN 6885
Max. Torque 77 daNm [6815 lb-in]

KB - tapered 1:10, Parallel key B6x6x20 DIN 6885
Max. Torque 95 daNm [8400 lb-in]



SH - $\varnothing 1\frac{1}{4}$ " splined 14T, DP12/24 ANS B92.1-1970
Max. Torque 95 daNm [8400 lb-in]



SPECIFICATION DATA

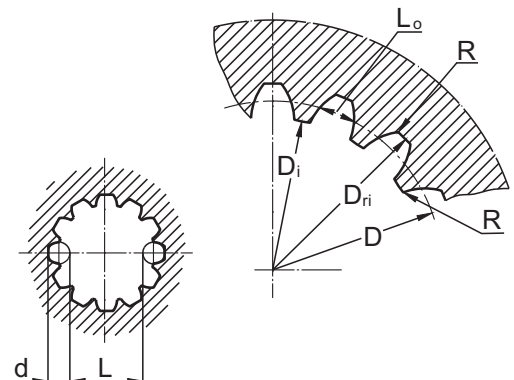
Description LBS/289(290) LBV/289(290)	21	32	43	63	L43	L63
*Min. Static Torque, daNm [lb-in]	20-22 [1770-1947]	31-34 [2743-3009]	41-45 [3628-3982]	61-64 [5399-5665]	41-45 [3628-3982]	61-64 [5399-5665]
Opening Pressure, bar [PSI]	min	12-13 [174-188]	18-20 [260-290]	24-26 [348-377]	37-39 [540-565]	20-22 [290-320]
	max	300 [4350]				
Min. oil quantity for brake releasing cm ³ [in ³]	7 - 8 [.427 - .488]					
Oil volume cm ³ [in ³]	50 - 120 [3.05 - 7.35]					
Max. Pressure in drain space bar [PSI]	5 [72]					
Weight kg [lb]	9 [19.8]					

* Static torque is obtained at working pressure - 0 bar [0 PSI].

INTERNAL SPLINE DATA for the ATTACHED COMPONENT

Fillet Root Side Fit	LBS(V)/289 LBS(V)/290		LBS(V)/314 LBS(V)/315	
	mm	inch	mm	inch
Number of Teeth	z	12	12	16
Diametral Pitch	DP	12/24	12/24	12/24
Pressure Angle		30°	30°	30°
Pitch Dia.	D	25,4	1	33,8656
Major Dia.	D _{ri}	28,0 ^{-0,1}	1.1 ± 1.098	38,4 ^{+0,4}
Minor Dia.	D _i	23,0 ^{+0,033}	.907 ÷ .905	32,15 ^{+0,06}
Space Width [Circular]	Lo	4,308±0,020	.1704 ÷ .1688	4,516±0,037
Fillet Radius	R	0,2	.008	0,5
Max. Measurement between Pins	L	17,62 ^{+0,15}	.699 ÷ .694	26,9 ^{+0,10}
Pin Dia.	d	4,835±0,001	.19039÷.19031	4,835±0,001
Corrected	x.m	+0,8	+0,031	+1,0

Standard ANS B92.1-1970, class 5
[m=2.1166]

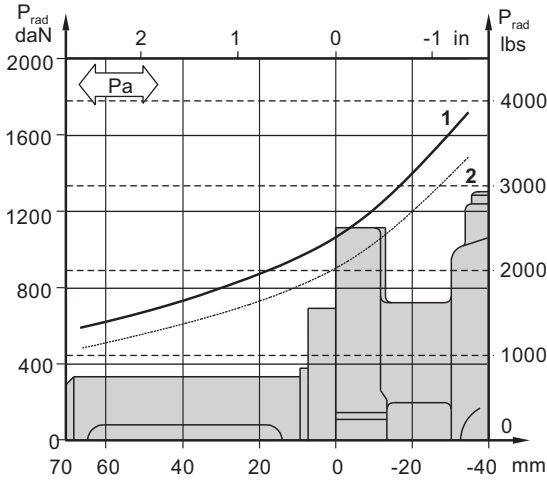


LOAD CURVE

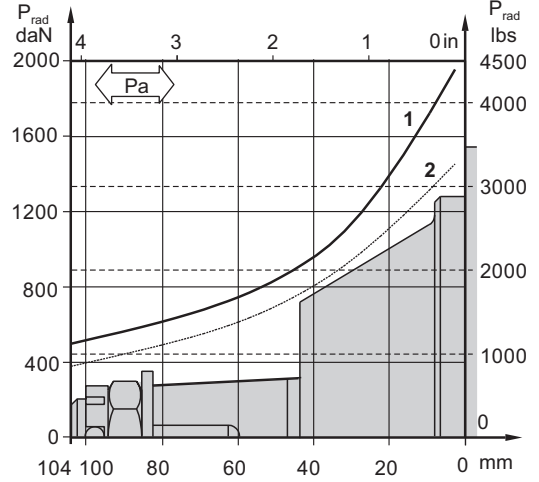
The curve applies to a B10 bearing life of 3000 hours at 200 RPM

- 1: $P_a < 350 \text{ daN}$ [787 lbs]
- 2: $P_a = 500 \text{ daN}$ [1125 lbs]

LBS(V)/289



LBS(V)/290



ORDER CODE - LB/288

1	2	3	4	5
LB/288	-			

Pos.1 - Input Shaft Hole
C, CO, SH, CB, SB

Pos.2 - Static Torque code (See Specification data)
7, 14, 21, 32, 43, 63

Pos.3 - Output Shaft Extensions**
C - $\varnothing 25$ straight, Parallel key A8x7x32 DIN6885
CO - $\varnothing 1$ " straight, Parallel key $\frac{1}{4}$ "x $\frac{1}{4}$ "x $\frac{1}{4}$ " BS46
SH - $\varnothing 25,32$ splined BS 2059 (SAE 6B)
SA - $\varnothing 24,5$ splined B25x22 DIN 5482

CB - $\varnothing 32$ straight, Parallel key A10x8x45 DIN6885
KB - $\varnothing 35$ tapered 1:10, Parallel key B6x6x20 DIN6885

Pos.4 - Option (Paint)***
omit - no Paint
P - Painted
PC - Corrosion Protected Paint

Pos.5 - Design Series
omit - Factory specified

ORDER CODE - LBS, LBV

1	2	3	4	5	6
LB	/	-			

Pos.1 - Type
S - Disc Brake for short motor S - MSS
V - Disc Brake for very short motor V - MSV

Pos.2 - Design code
289 - for MSS and MSV motors
290 - for MSS and MSV motors (Wheel Mount)

Pos.3 - Static Torque code (See Specification data)
21, 32, 43, 63, L43, L63

Pos.4 - Output Shaft Extensions*
CB - $\varnothing 32$ straight, Parallel key A10x8x45 DIN6885
KB - $\varnothing 35$ tapered 1:10, Parallel key A6x6x20 DIN6885
SH - $\varnothing 1\frac{1}{4}$ " splined 14T ANS B92.1-1970

Pos.5 - Option (Paint)**
omit - no Paint
P - Painted
PC - Corrosion Protected Paint

Pos.6 - Design Series
omit - Factory specified

NOTES:

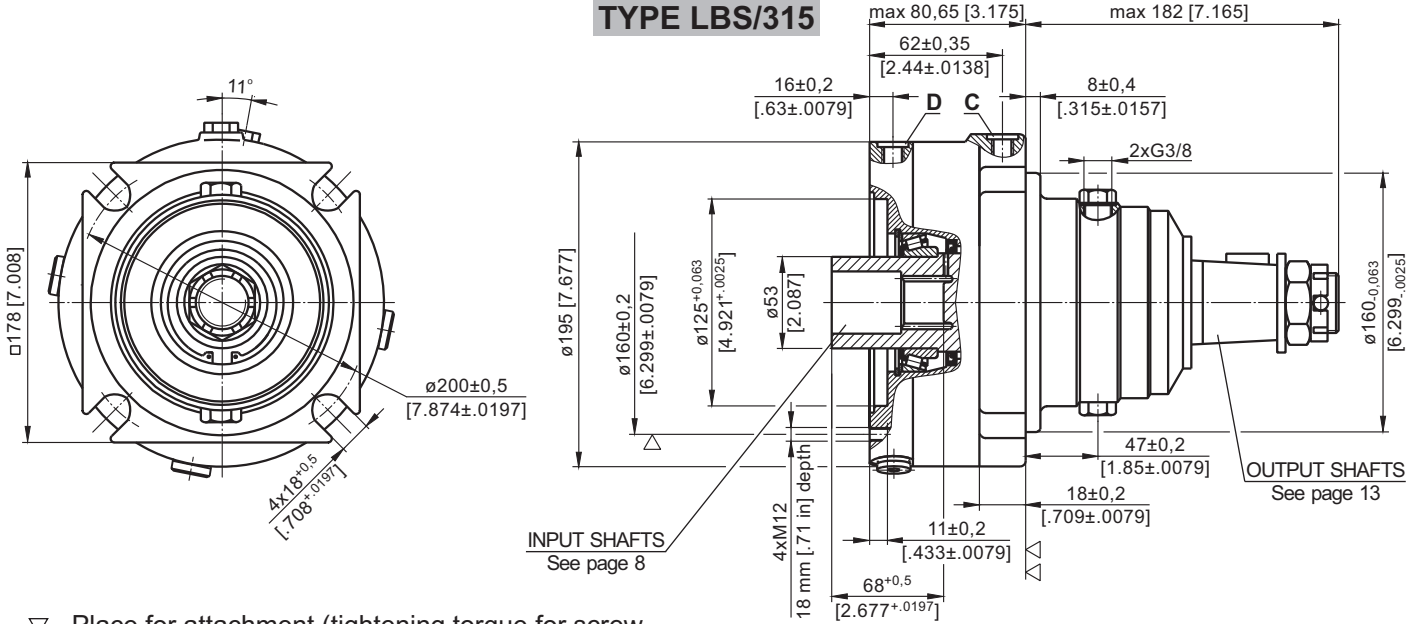
- * The permissible output torque for shafts must not be exceeded!
For Max. Torque values see data on pages 5 and 8.
- ** The color is by customer's request.

The Disc Brakes are mangano-phosphatized as standard.

ATTENTION:

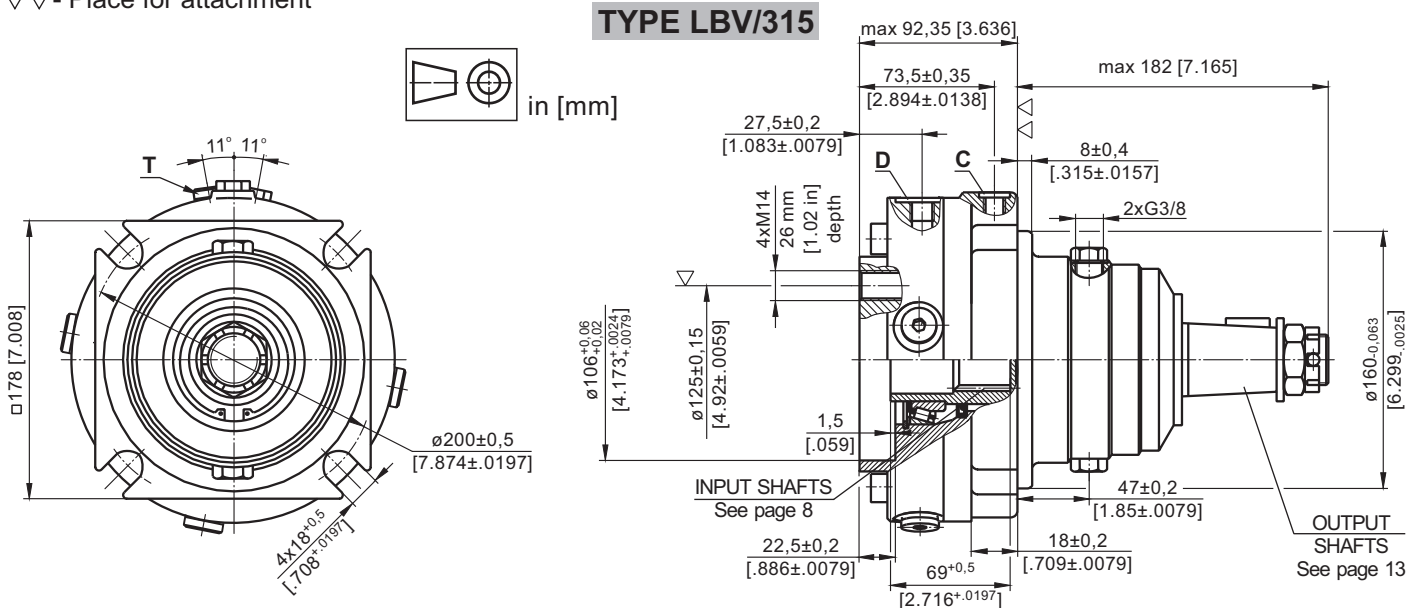
1. Hydraulic brake is delivered without oil (it is lubricated only).
2. Hydraulic brake is filled through the drain port **D**. Space is filled with $50 \div 120 \text{ cm}^3$ [$3.05 \div 7.32 \text{ in}^3$] mineral oil HLP (DIN 51524) or HM (ISO 6743/4). For LB/288 fill oil after hydraulic motor assembly.
3. In all brakes, friction discs and separators should be lubricated.

HYDRAULIC DISC BRAKES
for FLANGE ATTACHMENT to MTS and MTV HYDRAULIC MOTORS



▽ - Place for attachment (tightening torque for screw M12x30 - 12.9 DIN 912, $10^{+0,5}$ daNm [885⁺⁴⁴ lb-in])
▽▽ - Place for attachment

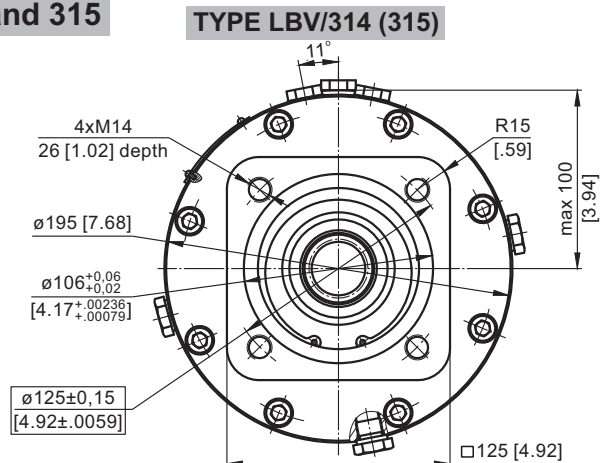
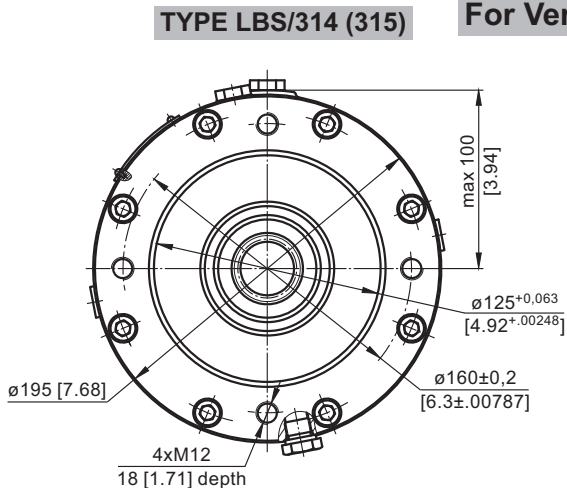
C: Brake release Port - G $\frac{1}{4}$, 12 mm [0.47 in] depth
D: Drain tap - G $\frac{1}{4}$, 12 mm [0.47 in] depth



▽ - Place for attachment (tightening torque for screw M14xL - 12.9 DIN 912, $13^{+0,5}$ daNm [1150⁺⁴⁴ lb-in])
▽▽ - Place for attachment

C: Brake release Port - G $\frac{1}{4}$, 9 mm [0.35 in] depth
D: Drain plug for the Brake - G $\frac{1}{4}$, 9 mm [0.35 in] depth
T: Drain plug for the Motor - G $\frac{1}{4}$, 9 mm [0.35 in] depth

INPUT FACE
For Versions 314 and 315



SPECIFICATION DATA

Description	LBS/314,315	21	29	43	65	85	110	130	
*Min. Static Torque,	daNm [lb-in]	18-23 [1593-2036]	28-33 [2478-2921]	42-46 [3717-4071]	61-70 [5399-6196]	83-92 [7346-8143]	108-118 [9559-10444]	126-136 [11152-12037]	
Opening Pressure,	bar [PSI]	min**	4-5 [58-72]	6-7 [87-101]	9-10 [130-145]	13-15 [188-217]	18-20 [261-290]	23-25 [333-362]	27-29 [391-420]
		max	300 [4350]						
Min. oil quantity for brake releasing,	cm ³ [in ³]	8-9 [.488-.549]							
Oil volume,	cm ³ [in ³]	250							
Max. Pressure in drain space,	bar [PSI]	5 [72]							
Weight for .../314 .../315	kg [lb]	24 [52.9]							
		25 [55.1]							

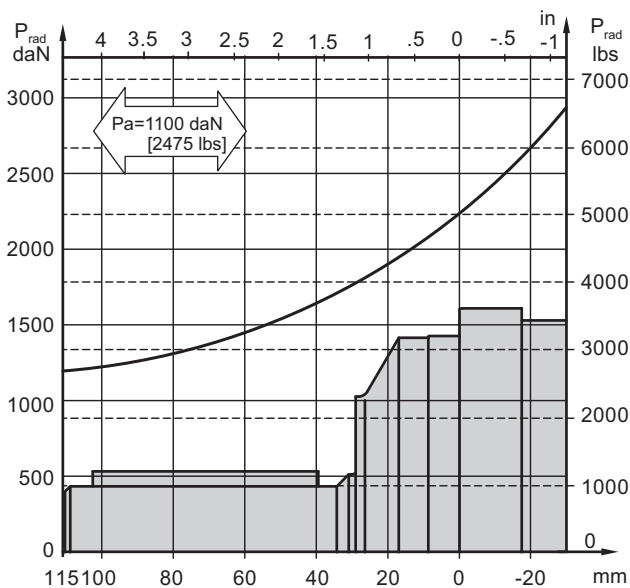
* Static torque is obtained at working pressure - 0 bar.

** The indicated value is a difference between the inlet pressure for driving of the brake and the drain pressure. Brakes must always have a drain line.

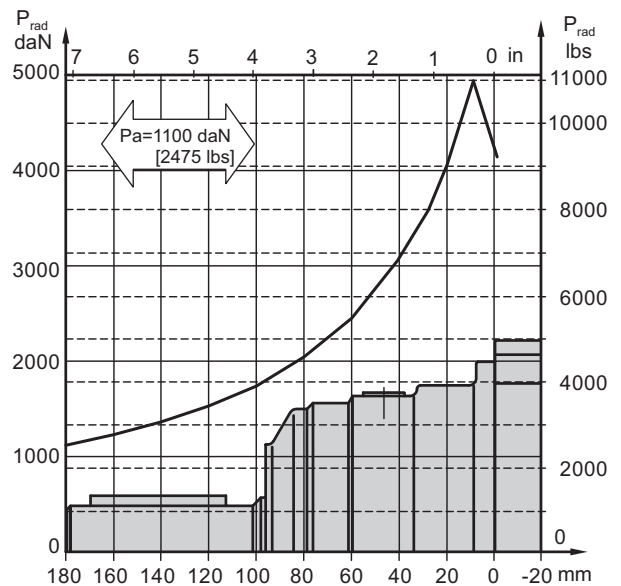
LOAD CURVE

The output shaft runs in tapered bearings that permit high axial and radial forces. The permissible radial load on the shaft is shown for an axial load of 0 N as function of the distance from the mounting flange to the point of load application. The curves apply to a B10 bearing life of 2000 hours at 100 RPM.

LBS(V) ... /314

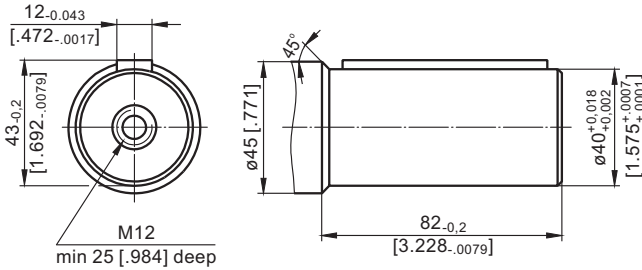


LBS(V) ... /315

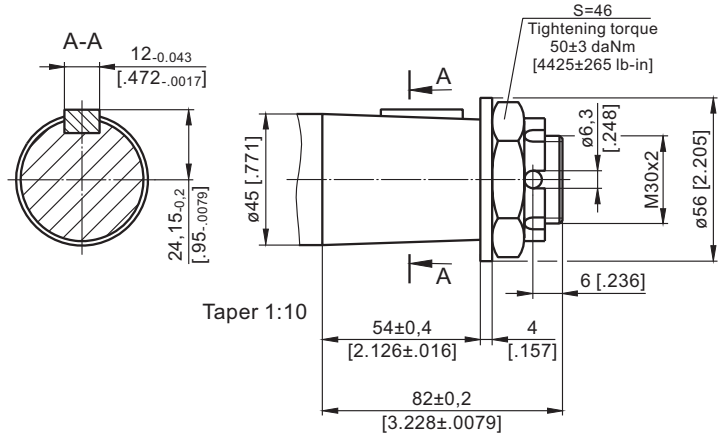


OUTPUT SHAFT EXTENSIONS

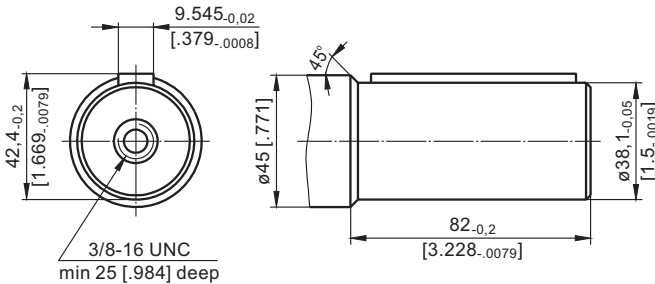
C - $\varnothing 40$ straight, Parallel key A12x8x70 DIN 6885
Max. Torque 132,8 daNm [11755 lb-in]



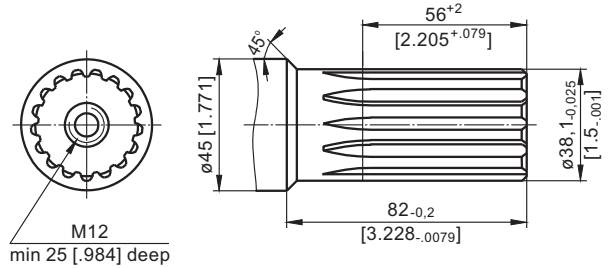
K - tapered 1:10, Parallel key B12x8x28 DIN 6885
Max. Torque 210,7 daNm [18650 lb-in]



CO - $\varnothing 1\frac{1}{2}$ " straight, Parallel key $\frac{3}{8}$ "x $\frac{3}{8}$ "x 2 $\frac{1}{4}$ " BS46
Max. Torque 132,8 daNm [11755 lb-in]



SH - $\varnothing 1\frac{1}{2}$ " splined 17T, DP 12/24 ANSI B92.1-1976
Max. Torque 132,8 daNm [11755 lb-in]



ORDER CODE

1	2	3	4	5	6
LB	/	-			

Pos.1 - Type

- S** - Disc Brake for short motor **S** - MTS
- V** - Disc Brake for very short motor **V** - MTV

Pos.2 - Design code

- 314** - for MTS and MTV motors
- 315** - for MTS and MTV motors (Wheel Mount)

Pos.3 - Static Torque code (see Specification data)

21, 29, 43, 65, 85, 110, 130

Pos.4 - Output Shaft Extensions*

- C** - $\varnothing 40$ straight, Parallel key A12x8x70 DIN6885
- CO** - $\varnothing 1\frac{1}{2}$ " straight, Parallel key $\frac{3}{8}$ "x $\frac{3}{8}$ "x 2 $\frac{1}{4}$ " BS46
- SH** - $\varnothing 1\frac{1}{2}$ " splined 17T, ANSI B 92.1-1976
- K** - $\varnothing 45$ tapered 1:10, Parallel key B12x8x28 DIN6885

Pos.5 - Option (Paint)**

- omit - no Paint
- P** - Painted
- PC** - Corrosion Protected Paint

Pos.6 - Design Series

- omit - Factory specified

NOTES:

- * The permissible output torque for shafts must not be exceeded!
- ** The color is by customer's request.

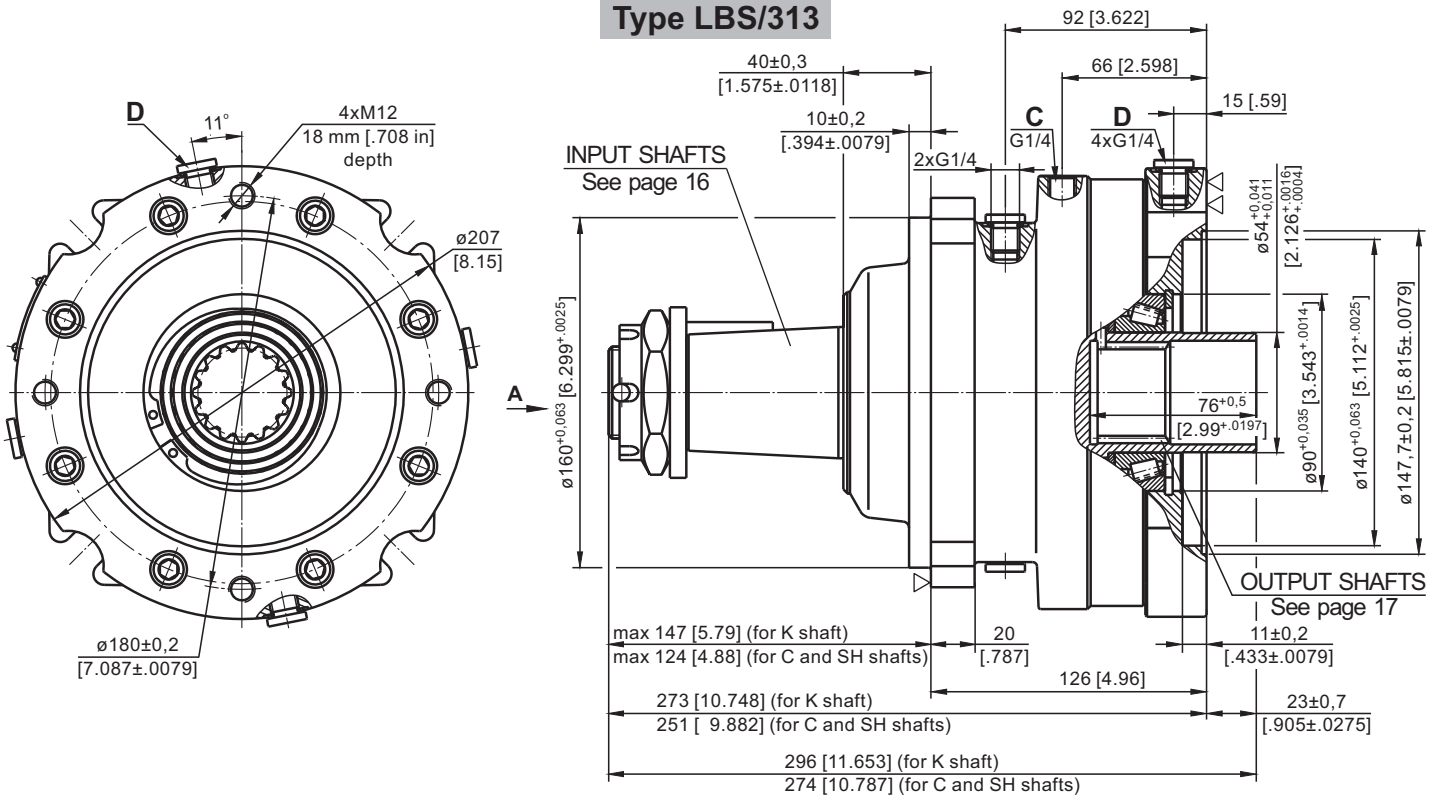
The Disc Brakes are mangano-phosphatized as standard.

ATTENTION:

- Hydraulic brake is delivered without oil (it is lubricated only).
- Fill the brake through the drain port **D** with 50 ÷ 120 cm³ [3.05 ÷ 7.32 in³] mineral oil HLP (DIN 51524) or HM (ISO 6743/4). LB/288 must be filled after the motor is assembled on the brake.
- In all brakes, friction discs and separators should be lubricated.

HYDRAULIC DISC BRAKES
for FLANGE ATTACHMENT to MVS HYDRAULIC MOTORS

Type LBS/313

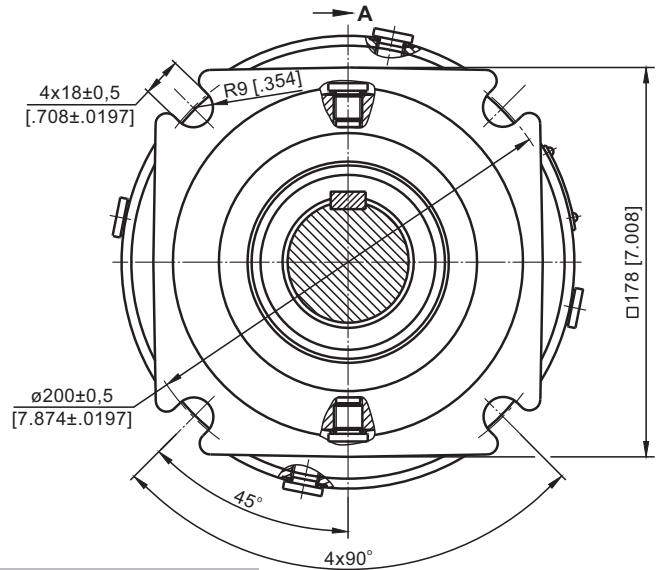


C: Brake release Port - G $\frac{1}{4}$, 12 mm [0.47 in] depth

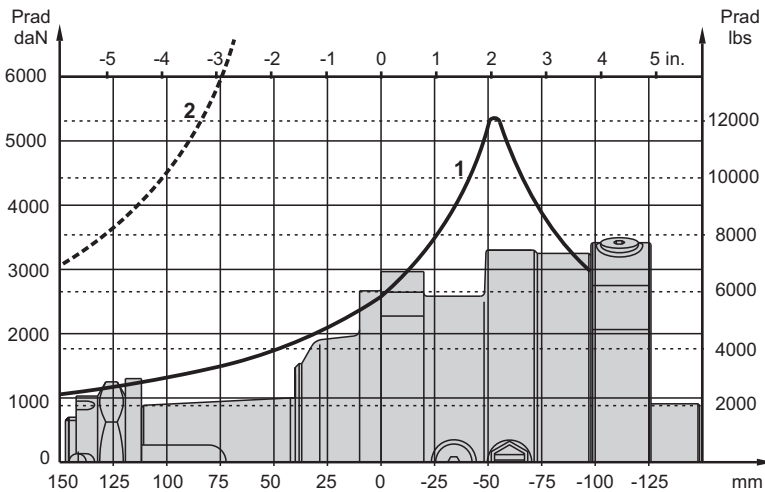
D: Drainage tap - G $\frac{1}{4}$, 12 mm [0.47 in] depth

▽ - Place for attachment

▽▽ - Place for attachment
(tightening torque for screw M12x35 - 12.9 DIN 912,
 $10^{+0,5}$ daNm [885⁺⁴⁴ lb-in])



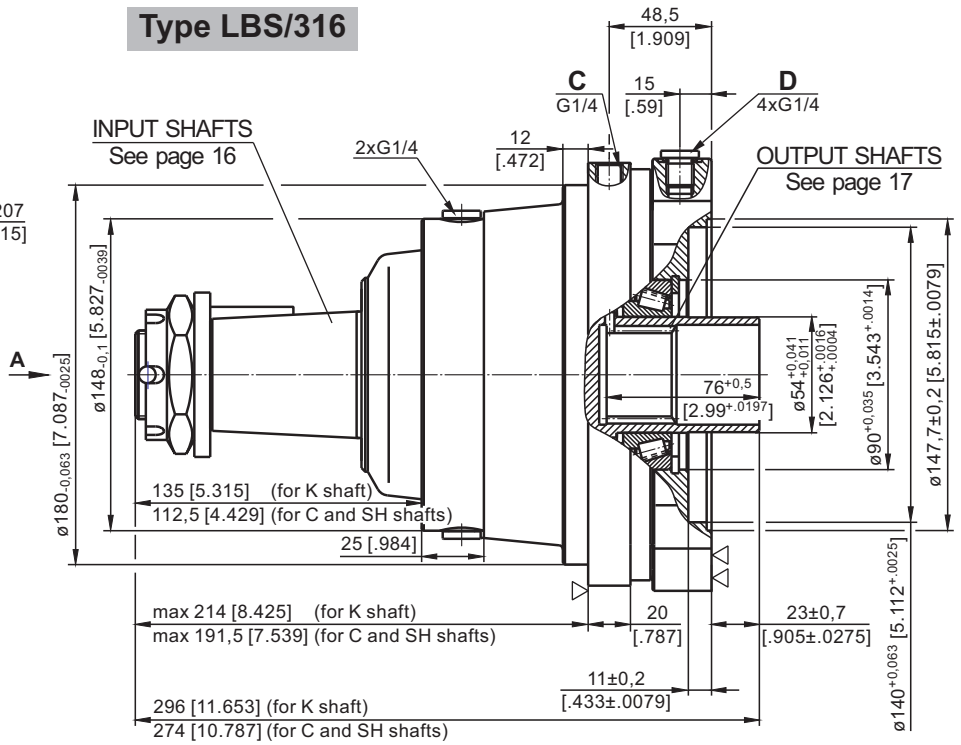
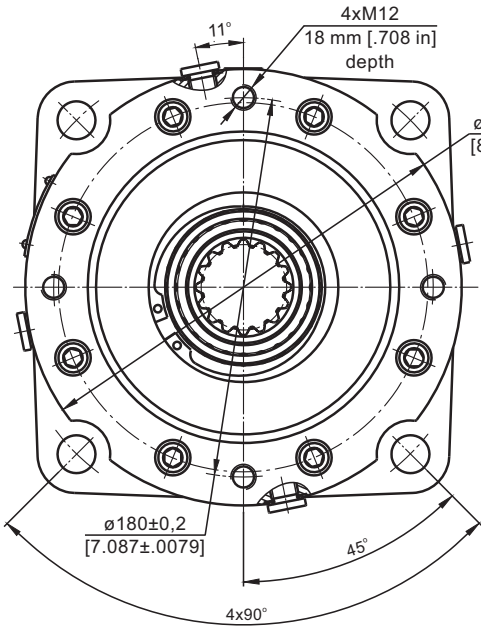
PERMISSIBLE SHAFT LOADS



- 1 - Bearing curve: The curve applies to a B10 bearing life of 3000 hours at 200 RPM.
- 2 - Shaft curve: The curve represents Max. permissible radial shaft load with safety factor 3:1.

HYDRAULIC DISC BRAKES
for FLANGE ATTACHMENT to MVS HYDRAULIC MOTORS

Type LBS/316

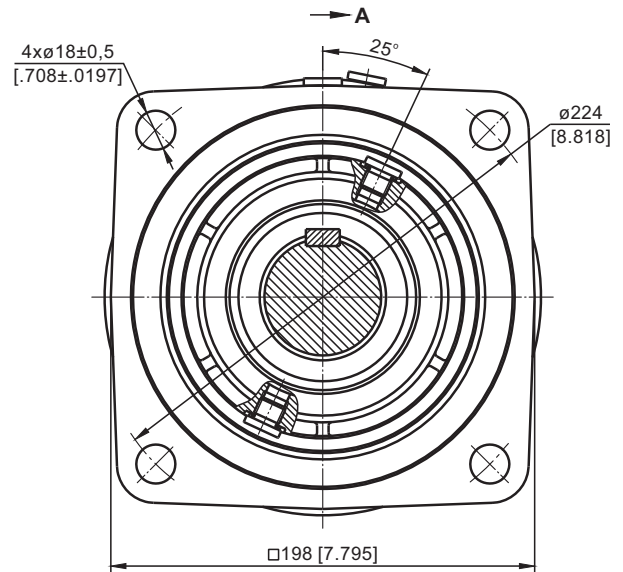


C: Brake release Port - G $\frac{1}{4}$, 12 mm [.47 in] depth

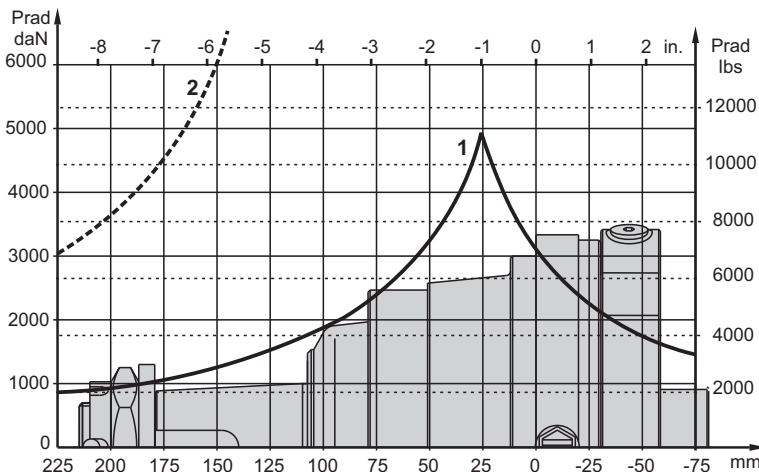
D: Drainage tap - G $\frac{1}{4}$, 12 mm [.47 in] depth

▽ - Place for attachment

▽▽ - Place for attachment
(tightening torque for screw M12x35 - 12.9 DIN 912,
10^{+0.5} daNm [885⁺⁴⁴ lb-in])



PERMISSIBLE SHAFT LOADS

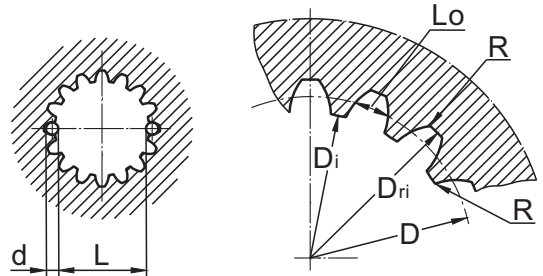


- 1 - Bearing curve: The curve applies to a B10 bearing life of 3000 hours at 200 RPM.
- 2 - Shaft curve: The curve represents Max. permissible radial shaft load with safety factor 3:1.

INTERNAL SPLINE DATA for THE ATTACHED COMPONENT

Standard ANS B92.1-1970, class 5
[$m=2.54$; corrected $x.m=+1,0$]

Fillet Root Side Fit		mm	inch
Number of Teeth	z	16	16
Diametral Pitch	DP	10/20	10/20
Pressure Angle		30°	30°
Pitch Dia.	D	40,640	1.6
Major Dia.	D _{ri}	45,2 ^{+0,4}	1.796 ^{+1.780}
Minor Dia.	D _i	38,5 ^{+0,039}	1.5175 ^{+1.516}
Space Width [Circular]	Lo	5,18±0,037	.2055 ^{±.2025}
Fillet Radius	R	0,4	.015
Max. Measurement between Pins	L	32,47 ^{+0,15}	1.284 ^{+1.278}
Pin Dia.	d	5,6±0,001	.22051 ^{±.22043}



Hardening Specification:
HV=750±50 on the surface.
HV=560 at 0,7±0,2 mm [.035±.019in] case depth
Material: 20 MoCr4 EN 10084 or better.

ORDER CODE

	1	2	3	4	5
LBS /		-			

Pos.1 - Design code

313 - for MVS motors

316 - for MVS motors (wheel mount)

Pos.2 - Static Torque code (see Specification data)

21, 29, 43, 65, 85, 110, 130

Pos.3 - Output Shaft Extensions*

C - ø50 straight, Parallel key A14x9x70 DIN6885

SH - ø2 1/8" splined, ANSI B 92.1-1976

K - ø60 tapered 1:10, Parallel key B16x10x32 DIN6885

Pos.4 - Option (Paint)**

omit - no Paint

P - Painted

PC - Corrosion Protected Paint

Pos.5 - Design Series

omit - Factory specified

NOTES:

* The permissible output torque for shafts must be not exceeded!

** The color is by customer's request.

The Disc Brakes are mangano-phosphatized as standard.

ATTENTION:

1. Hydraulic brake is delivered without oil (it is lubricated only).

2. In all brakes, friction discs and separators should be lubricated. Space is filled with 150 ÷ 300 cm³ [9.15 ÷ 18.3 in³] mineral oil HLP (DIN 51524) or HM (ISO 6743/4).